



# 2017 Leadership Clinic Summary Report



April 29 - May 2, 2017, Nipika Mountain Resort



**EEPSA**  
Environmental Educators  
Provincial Specialist Association







# 2017 Leadership Clinic

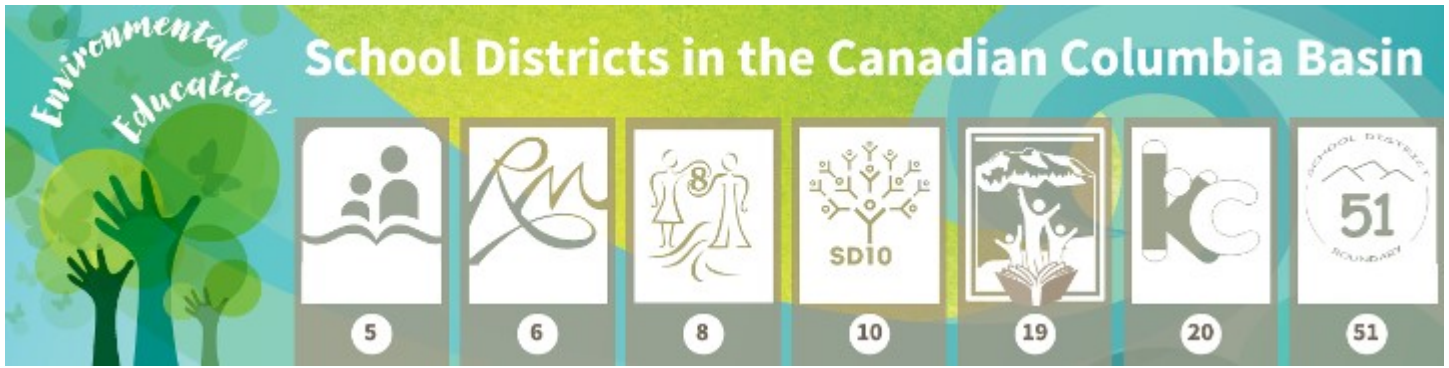
CBEEN's Environmental Education Leadership Clinic provides an incredible opportunity for teams to come together and turn their great ideas into action. It is based on a model created nationally, and uses creative group thinking to identify and develop strategic approaches to solving complex issues that results in outcome-based action plan that truly makes a difference.

The 2016 Environmental Education Leadership Clinic supported School District teams across the Columbia Basin to work collaboratively to develop goals and action plans that helped to effectively guide implementation of the redesigned curriculum. One of the top identified goals of all school districts was to support the development of Local Chapters of the BC Environmental Educators Provincial Specialist Association (EEPSA). These Local Chapters are teacher-driven organizations that help local teachers come together to collaborate, network and engage in professional development.

As a result, the 2017 Leadership Clinic was a partnership between EEPSA and CBEEN. It facilitated the development of 7 Local Chapters of the Environmental Educator's Provincial Specialist Association (EEPSA) in each school district in the Columbia Basin.







# 2017 Local Chapter Teams

Southeast Kootenay School District 5



Rocky Mountain School District 6



Kootenay Lake School District 8



Kootenay-Columbia School District 20



Revelstoke School District 19



Arrow Lakes School District 10



Boundary School District 51





# Leadership Clinic Schedule

Time	Saturday, April 29	Sunday, April 30	Monday, May 1	Tuesday, May 2
THEME	ARRIVAL	ORIENTATION	PLANNING	NEXT STEPS
7:30am - 8:00am		Team Rep Touch Base	Team Rep Touch Base	Team Rep Touch Base
8:00am - 8:45am		BREAKFAST	BREAKFAST	BREAKFAST
8:45am - 9:45am		Welcome and Orientation	Bridges & Barriers	Team Planning Time
9:45am - 10:45am		Introductions	Team Planning Time	Next Steps Session
10:45am - 12:00pm		Team Building Activities	Open Space Session	Closing Activity
12:00pm - 1:00pm		LUNCH	LUNCH	LUNCH
1:00pm - 1:45pm		EEPSA Local Chapter: Overview & Set-up	Local Resources	Pack-up / Departure
1:45pm - 3:00pm			Open Space Session	
3:00pm - 4:00pm		Team Planning Time	Team Planning Time	
4:00pm - 6:00pm	Cabin Check-in	Walking the Talk: Outdoor Networking Activity	Outdoor Activity Options	
6:00pm - 7:00pm	Social / Icebreakers	Sharing Ideas Session	Sharing Ideas Session	
7:00pm - 8:00pm	SUPPER	SUPPER	SUPPER	
8:30pm	Evening Activity Options	Evening Activity Options	Evening Activity Options	





# Outcomes

- 1) The establishment of a Local Chapter of EEPSEA in every school district in the Columbia Basin with a plan to support environmental education
- 2) The development of an inter-district community of committed teachers who are empowered to share their passion for environmental education
- 3) An organized group of local leaders to facilitate networking opportunities for teachers and environmental educators
- 4) Increased access to resources for outdoor and environmental learning
- 5) More professional learning opportunities to connect classrooms to communities
- 6) An environmental education mentorship program
- 7) New energy dedicated to outdoor, experiential and place-based learning

# Impacts

- 1) Many more teachers comfortable practicing place-based, place-conscious, environmental and outdoor education as part of their regular routine
- 2) The recognition of the outdoor classroom as an extension of the indoor classroom
- 3) More students outside the classroom on a more frequent and regular basis
- 4) The normalization of environmental and outdoor education
- 5) The connection of students to nature, and an increased stewardship ethic



# Participant Feedback

- The clinic was an amazing gift, not only for our district team to come together but also for cross-pollinating between districts and the region. This is pro-d that truly walks the talk and sets an incredible leadership example.
- An amazing, rich opportunity to collaborate with like-minded people where networking and building of place-based / outdoor education leaders is made possible.
- The collaborative opportunity to network with like-minded teachers has inspired me to “be the leader I have been waiting for”!
- This has been, by far, the best teacher conference that I have attended in my 18 years of teaching!
- A great place to have the space and time to collaborate with like-minded people to find momentum and generate ideas to implement environmental education into our classrooms.
- This was an amazing and organic experience. What a phenomenal opportunity to connect with like-minded individuals.
- This EE Leadership Conference was deeply devoted to students and the well-being of our future connections to place.
- This clinic gave us guidance and an opportunity to formalize and move forward with forming a local chapter of EEPSEA. But it also gave us the network, inspiration, collaboration, and connection with people all over the region. I feel invigorated.
- Having an expanded period of time removed from our busy lives and immersed in such a beautiful, natural environment allowed us to focus on the planning task.
- It is impossible not to be inspired when surrounded by so many like-minded, enthusiastic and knowledgeable educators.
- This Leadership Clinic provided me and my district team with a clean focus, support and direction for creating a Local EE Chapter.
- Wow! Thank-you for the support and time to work together. I have made many new relationships.
- This was an amazing and inspirational opportunity to network with like-minded teachers in a great effort to get kids connected to place.
- What an inspirational opportunity to network with so many innovative individuals across the region!
- This Leadership Clinic has provided the opportunity to network and create a community with like-minded individuals to provide support and ideas to support teachers in our district to get students outside.



# Participant Feedback

- This Leadership Clinic affected me immensely. I have often felt like I was alone in my classroom dedication to learning outside of the classroom. Being a part of forming a Local Chapter has made me feel like I have a voice that is now a part of something much bigger.
- The Leadership Clinic's facilitators developed a series of sessions that supported our work beautifully. In such a brief amount of time, they build our capacity and moved us into action towards increased EE leadership within our school district.
- For change to happen in the way we teach and the way we create environmentally responsible citizens there needs to be support. Support has come in the form of providing a gathering point and inspiration for the movement to build and for leaders to lead teachers into the movement with us.
- There is a distinct impact when you remove staff from their busy lives to collaborate. The uninterrupted time is invaluable.
- Spending time with committed, passionate and like-minded teachers re-energized me and helped me make new connections to place-based learning.
- This experience allowed and encouraged me to connect with many teachers. I was able to collect ideas, get enthusiastic and it was very valuable.
- This EE Leadership Clinic is so positive for solidifying what we do and why so many people share our commitment to connect students to nature.
- I am grateful for this opportunity for us to build our local EEPSEA Chapter and make concrete plans for our next steps in order to build the group. This clinic also provide an amazing opportunity to network and develop connections beyond the district.
- We live in a fast-paced world that is constantly changing. To find solutions and create new ideas we need opportunities to slow down and focus. This workshop did that—it allowed us to go deep and really focus on the tasks at hand, uncluttered by the constant demands of teacher and family.
- It has helped me to connect with a community of educators and organizations that value environmental education.
- I feel like I've been handed the necessary tools to not only change my personal practice, but to offer mentorship and resources to other teachers. I look forward to the day that my outdoor classroom is seen as an extension of my indoor one.
- An amazing experience to collaborate with colleagues and new friends for the common interest and purpose of connecting our students to the natural world around them.





# Thanks to our Supporters!



Environmental Education

## School Districts in the Canadian Columbia Basin

5	6	8	10	19	20	51